



The Pulse

THE DEAN'S MESSAGE

Eli Adashi



Of course, uppermost in my mind is the recent Match Day celebration—my first at Brown Medical School. The Ides of March notwithstanding,

Match Day was an emotional and magical event at which Dean Smith and I were honored to be joined by President Simmons and Dean Besdine. Rewardingly, many of our graduating seniors will be joining highly selective residency training programs in some of the finest schools our nation has to offer. The most common destination, the city of Boston, with its multiplicity of programs, was closely followed by New York and Providence. Our students are also heading to California, Pennsylvania, Illinois, Ohio, and

Florida. For all of us involved in your medical school careers—faculty and administrators alike—the acceptance of our seniors into the nation's best residency programs, whether for specialties or primary care, is immensely gratifying. Class of 2005, I congratulate you.

For me, another highlight of the month of March was the opportunity to meet with and address the PLME students. This meeting, arranged by the PLME Senate (notably, Joe Kim, Annamarie Atiba, and George Turini), was apparently the first interactive discussion PLMEs as a group have had with the dean of medicine and biology. I was delighted to have been asked and look forward to many more such opportunities for face-to-face communication.

As life goes on, I hope that you will take note of some outstanding lectures and that you plan to attend. Former US Senator Max Cleland, who lost both legs and an arm in the Vietnam War, will deliver the Barnes lecture as part of the Public Health Research Day on April 5. This event coincides with the public launch of our Pathways to Recovery from Combat center. Also this month, physician and author Ethan Canin will deliver the Sheridan lecture. Dr. Canin received his MD from Harvard Medical School and is a professor of fiction at the University of Iowa Writer's Workshop.

I am greatly looking forward to spring in Providence, and to continuing to get to know each of you. I wish you a successful and productive end of semester.



Brown Medical Students in the Community

Michael Wang, Montoya Taylor, Josh Gepner, Michael Joseph, Manuel Lam, Ido Preis, Amy McIntyre, Vincent Capaldi, and Sophie Hernandez.

Brown's Family Medicine Interest Group went to three local grade schools and presented the Tar Wars program this March. Tar Wars is a program designed to educate students about being tobacco-free, provide them with the tools to make positive decisions regarding their health, and promote personal responsibility for their well-being. Tar Wars presentations are typically given by local primary care physicians under the coordination of the RI Medical Society. This year, the program was able to expand by including medical student presenters thanks to Brown's Family Medicine Interest Group. Information about Tar Wars can be found at www.tarwars.org.

In this issue...

APRIL 2005 ☼ Vol. 22 No. 7

Admissions & Financial Aid	6
Announcements	8
Associate Dean	2
Dean's Message	1
Medical Student Affairs	3
Minority Medical Affairs	7
Office of Women in Med	5
PLME Page	5
Professional Development	7
Residency Announcements	2
Senate Reports	4

Next copy deadline:

April 21, 2005

<http://bms.brown.edu/students/pulse/>

Questions, Comments, or Submissions:

Rose_Bell@Brown.edu

ASSOCIATE DEAN

Steve Smith

Congratulations to the MD Class of 2005 for an excellent match! Soon-to-be graduates matched in many top-rated programs in their respective specialties such as the Massachusetts General Hospital in internal medicine and surgery, Duke in ob/gyn, Baskins Palmer Eye Institute in Miami in ophthalmology, the Brigham & Women's in diagnostic radiology, and the University of Oregon in family medicine. The faculty in each department identified the top-rated program in their respective specialties, excluding their own program. Over the years, Brown graduates have been statistically more likely to match in those programs than graduates of other medical schools.

Congratulations to Flavio Casoy who was elected to head the section on medical student debt of the Medical Education Action Committee of the American Medical Student Association (AMSA). The rising cost of medical education and the ensuing escalation in student debt may be deterring low-income students from considering medicine as a career and influencing the career choice among current medical students that is not in the best interest of the nation's health workforce. The Association of American Medical Colleges recently released an authoritative report on this issue. The report makes a number of bold recommendations for medical schools to adopt. The administration will be reviewing these recommendations this spring.

Dr. Donald Coustan, chairman of the department of obstetrics and gynecology, has been making the rounds of each department in the medical school to present a draft report of the task force on student mistreatment. The draft report outlines ways that we can create a respectful learning environment and prevent any mistreatment of learners as well as procedures to take action against mistreatment when it occurs. While formal mechanisms as outlined in this report are necessary, they alone are not sufficient to achieve our goals of a respectful learning environment and to root out mistreatment. A change of culture is needed in which faculty, students, and staff speak out and support one another against disrespectful behavior. Together, we can make this happen.

BROWN MEDICAL SCHOOL RESIDENCY POSITIONS

MD 2005

Barham Abu Dayyeh	Massachusetts General Hospital - Primary	Internal Medicine
Samuel Andorsky	Friedenwald	Ophthalmology
	Sinai Hospital - Prelim	Internal Medicine
Matthew Babineau	Beth Israel-Deaconess Medical Center	Emergency Medicine
Laura Capaldi	University of Massachusetts Medical School	Dermatology
	St. Vincent's Medical Center	Transitional
Justine Chang	Women & Infants' Hospital	Ob/Gyn
Kara Chew	University of California-San Francisco - Primary	Internal Medicine
Charles Chia	Mayo Graduate School of Medicine	Dermatology
	St. Vincent's Hospital - Prelim	Internal Medicine
Carla Chibwasha	Women & Infants' Hospital	Ob/Gyn
Felicia Chu	Beth Israel Deaconess Medical Center	Neurology
	Beth Israel Deaconess Medical Center - Prelim	Internal Medicine
Stacey Clegg	Oregon Health & Science University	Internal Medicine
Aine Clements	Boston University Medical Center	Internal Medicine
Lucy Demerjian	Harvard Longwood Psychiatry	Psychiatry
Curtiland Deville	Hospital of the University of Pennsylvania	Radiation-Oncology
	Harbor Hospital	Transitional
Nadine Dubowitz	University of California-San Francisco - Primary	Internal Medicine
Heather Esquivel	Bayfront Medical Center	Family Practice
Noam Fast	Einstein/Montefiore Medical Center	Psychiatry
Diana Ferris	Beth Israel-Deaconess Medical Center	Radiology
	Baystate Medical Center -Prelim	Internal Medicine
Rebecca Fisher	University of Connecticut Medical Center	Pediatrics
Matthew Frances	University of California-Davis Medical Center	Internal Medicine
Paul George	Memorial Hospital	Family Practice
Robert Gray	Rush University Medical Center	Orthopedic Surgery
Wendy Gray	Cambridge Hospital	Internal Medicine
Rosalind Hammond	Akron General Medical Center	Med/Peds
George Hardy	Rhode Island Hospital	Med/Peds

Student News

Congratulations to Ainsley MacLean, on receiving the Max Kade Fellowship to study ultrasound at the University Hospital of Vienna in April! And to Darpun Dhawan and Beverly Johnson—recipients of Doris Duke fellowships!

Staff News

Dean Steve Smith was honored with a Lifetime Distinguished Service Award at the 55th annual convention of the American Medical Student Association (AMSA) in Washington, D.C., on March 19. The award was to recognize "his exemplary lifetime achievements and support of medical students, in pursuit of their ideals as aspiring, socially responsible physicians. Also for his contributions to the improvement of medical education in providing a healthy and nurturing learning environment."

THE DIRECTOR
Alexandra Morang

BROWN MEDICAL SCHOOL RESIDENCY POSITIONS
MD 2005

Congratulations to the MD Class of 2005 on a tremendous match! The graduates of 2005 will be heading out to residency programs in 18 states and Canada. 9 students plan to stay in Rhode Island with 4 at RIH, 1 at Memorial Hospital, 2 at Roger Williams Hospital and 2 at Women & Infants. The other major geographic areas that will see an influx of BMS graduates are California (5), New York (11) and Massachusetts (16).

In terms of specialties—4 students are going into pediatrics; 16 are going into internal medicine and 16 will be doing a preliminary year in medicine; 1 will go into internal medicine-psychiatry; 3 are going into emergency medicine; 7 are going into family medicine; 5 students are going into surgery/surgery prelim; 3 students are going into OB/GYN; 3 students are going into psychiatry; 2 are going into med/peds; 2 students are going into orthopedic surgery. 5 students will enter the specialty field of dermatology; 1 will enter neurology, 3 ophthalmology and 1 urology; 6 are going into radiology and 3 in to radiation/oncology.

A complete list has been sent to your email. Again, congratulations on a job well done! We are extremely proud of all of you!

MD '06: Don't miss the Glaxo Pathway workshop on Wednesday, April 13, 2005 from 5:00pm-8:30pm in BMC 291. For more information, or to sign up contact Donna at Donna_Arruda@brown.edu

Michael Harwood	Rhode Island Hospital	Dermatology
Charles Hebert	Roger Williams Medical Center	Internal Medicine (Prelim)
Eric Huang	Rush University Medical Center	Internal Medicine-Psychiatry
Jason Iannuccilli	New England Medical Center	Transitional
Rumi Iqbal	University of Connecticut	Anesthesiology
John Kim	Rhode Island Hospital	Radiation-Oncology
Kristen Koconis	Brown University Internal Medicine Residency	Internal Medicine (Prelim)
Brian Kwong	North Mississippi Medical Center	Family Practice
Albert Kwon	Boston University Medical Center	Radiology
Karen Law	St. Vincent Hospital	Internal Medicine (Prelim)
Peter Lee	Milton S. Hershey Medical Center	Radiology
Christine Liang	Milton S. Hershey Medical Center	Internal Medicine (Prelim)
Janette Lin	St. Lukes-Roosevelt Hospital Center	Emergency Medicine
Ainsley MacLean	Stony Brook Teaching Hospital	Surgery
Nina Mirchandani	Emory University School of Medicine	Internal Medicine
Jennifer Montoya	St. Elizabeths Medical Center	Surgery
Elizabeth Moran	NYU School of Medicine	Dermatology
Michelle Morreale	NYU School of Medicine	Internal Medicine (Prelim)
Lorraine Ng	Boston University Medical Center	Internal Medicine-Primary
Amy Noack	Brigham & Womens Hospital	Radiology
Elizabeth Paupst	Mt. Auburn Hospital	Internal Medicine (Prelim)
Claudeleedy Pierre	St. Lukes-Roosevelt Medical Center	Dermatology
Michael Poch	St. Lukes-Roosevelt Medical Center	Internal Medicine (Prelim)
Matthew Press	University of Washington Affiliated Hospitals	Pediatrics
Louai Razzouk	University of Arizona Affiliated Hospitals	Family Practice
Usha Reddy	New England Medical Center	Internal Medicine
Amy Schecter	New York Presbyterian Hospital-Cornell	Pediatrics
Erica Schockett	San Francisco General Hospital	Internal Medicine-Primary
Elizabeth Schoenfeld	University of Toronto	Family Practice
Shayan Shirazian	Boston University Medical Center	Family Practice
Dorothy Shum	Rhode Island Hospital	Urology
Darren Smith	Rhode Island Hospital	Surgery (Prelim)
Nicole Sunderland	Hospital of the University of Pennsylvania	Internal Medicine
Dennis Tanner	Mt. Sinai Hospital	Internal Medicine
Arlene The	Bascom Palmer Eye Institute	Ophthalmology
Tonslyn Toure	Northwestern McGaw	Internal Medicine (Prelim)
Brownsyne Tucker	North Shore-Long Island Jewish Health System	Surgery
Robert Villarreal	Hospital of the University of Pennsylvania	Internal Medicine-Primary
Alexander Westphal	George Washington University	Emergency Medicine
Justin Wheeler	George Washington University	Internal Medicine (Prelim)
Brian Zipser	George Washington University	Internal Medicine
	New York Presbyterian Hospital	Radiology
	Kaiser Permanente-Los Angeles	Surgery (Prelim)
	Boston University	Radiation-Oncology
	Yale-New Haven Hospital	Internal Medicine (Prelim)
	Roger Williams Medical Center	Pediatrics
	University of Tennessee College of Medicine	Ophthalmology
	New York Eye & Ear Infirmary	Internal Medicine (Prelim)
	Lenox Hill Hospital	Internal Medicine
	Boston University Medical Center	Ob/Gyn
	Duke University Medical Center	Orthopedic Surgery
	Rhode Island Hospital	Integrated Adult/Child Psych
	Yale-New Haven Hospital	Family Practice
	Oregon Health & Science University	Radiology
	UCLA Medical Center	Internal Medicine (Prelim)
	Lenox Hill Hospital	

Congratulations!

PLME SENATE

George Turini

Allow me to begin this short note with a heartfelt thank you to Dean Eli Adashi and all of the PLME students who attended the dinner and discussion last month that was organized by Joseph Kim and Annamarie Atiba. Good food and good conversation were in abundance and a good time was had by all who attended.

As the Senate prepares for next year, our newest officers are working hard with current members to plan for the return of favorite events, such as the Whole Physician Medical Student panel discussions, as well as the conception of new functions and opportunities to make the PLME even more student-friendly and appealing than it has ever

been. Keep an eye on your email-box in the near future for a listing of next year's Senate members so that you can contact them with your very own ideas or comments.

In addition to keeping an eye on the future, the PLME Community Service is working hard with the Brown Medical School in producing the "Breeze Against Wheeze 5k Race/Walk." This phenomenal event begins on Pembroke Field on April 24, with registration that day starting at 9:00 am and all proceeds going to support and raise awareness for the Community Asthma Programs of Hasbro Children's Hospital Asthma Camp. Pre-registration begins April 18th and can be completed at the PO or the

Ratty. Please contact Isis Burgos or Annie Wang for further information.

In closing, with this being my last contribution to the Pulse as PLME Co-President, I'd like to thank all of the students and Deans with whom I've had the great pleasure of working over the past two years. I would like to say a special thanks to my Co-President, Isis Burgos, for becoming such a good friend and for teaching me that the success of any individual means far less than the successes of a partnership. It has been an honor to represent and serve all of you in the PLME, and I wish you the greatest success with all of your future endeavors.

STUDENT SENATE

Charles Hebert

March has been a busy and exhilarating month for just about everyone on campus. As the end of the semester starts to come into focus, there are fewer individual announcements for each class, but there are a few things I'd like to share with all of you.

All classes – This year's annual Ball and Socket will be held on Friday, April 8, 2005 at the Federal Reserve in downtown Providence. The venue has been used previously for this event and was received well by many who attended. As has been done in past years, buses will be available to shuttle students from the Biomed Center to the Federal Reserve. Tickets will be on sale soon. For more information, please contact Liz Merritt. (Elizabeth_Merritt@brown.edu).

Elections for Senate positions for the 2005-2006 academic year will occur

next month and continue into early April. These will proceed in two rounds – one for positions on the executive committee and another for all remaining positions, including class advocates for all four years. In order to run for the executive committee, you must have been a member of the Senate for at least one year. Class advocate positions are open to anyone regardless of experience. If you are interested, I urge you to talk to people currently holding the positions for which you might like to run.

MD '05 – For those of you on financial aid, please remember that you need to schedule your Financial Aid Exit Meeting with Amy Martin (Amy_Martin@brown.edu) in the Financial Aid Office (if you have not already done so). At this meeting, the details regarding repayment options, total debt, and other important information will be presented.

Remember that you must either purchase or rent your academic cap and gown for Commencement by April 1st. If you have not visited the bookstore to make these arrangements, please do so as soon as possible.

The next meeting of the Medical Student Senate will occur on Tuesday, April 5, 2005 in BMC 217 @ 7:30pm. All of you are welcome to attend.

Please note that for the month of April, I will be overseas in India and the Himalayas for an away elective. During my absence, Jon Grossberg will assume the role of Senate President until my return to campus at the end of April. Between March 29 and April 26, please email him (Jonathan_Grossberg@brown.edu) if questions or concerns arise.

PROGRAM IN LIBERAL MEDICAL EDUCATION

Julianne Ip & Hilary Sweigart

Welcome to spring everyone. Congratulations to the newly elected 2005-06 Senate Officers. We look forward to working with all of you.

PLME Freshmen, Meiklejohns and Freshman Advising Deans: The next WholePatient Program will be held on April 20th at 5:45pm in Chancellor's Dining Room. Dr. Gary Frishman and his patient will discuss issues of infertility and the doctor-patient relationship. We look forward to seeing you there! Please RSVP for dinner to Joan_Fullerton@brown.edu.

PLME Sophomores REMINDER: Your PLME Educational Plan with a copy of your signed concentration forms are due to the PLME Office by April 18. Stop by Arnold Lab 124 for assistance or call 863-3133.

WOMEN IN MEDICINE

Debra Abeshaus

The Women in Residency Fair is an annual event that brings together women medical students with women medical faculty and residents from numerous specialty areas. This year's fair will be held on April 7, 5:30 – 7:00pm at the Brown Faculty Club. Plan to attend (fourth-years too) and enjoy great conversation, information gathering and a buffet. The program is co-sponsored by the Office of Women in Medicine and AMWA. RSVP appreciated: call 863-2450 or e-mail debra_abeshaus@brown.edu.

The Rhode Island Medical Women's Association (RIMWA) invites you to participate in two upcoming special events.

RIMWA's Annual Meeting will be held on the evening of May 9th at 6:30pm, in the Brown Faculty Club. Dr. Michele Cyr, Associate Dean for

A DAY ON COLLEGE HILL Please join us on April 20, 10–11:30am in Leung Gallery for the PLME Reception as part of *A Day on College Hill*. This annual event is for high school seniors offered admission to the program for the Class of 2009. We'll have a student panel, introductions, a question/answer period and refreshments. Save the date and stop by to welcome the visiting students and their families.

Consider signing up for a shadowing experience either here in Rhode Island during the semester or in your home state over the summer recess by visiting the Medicine in Action web site at <http://bms.brown.edu/students/miap/>.

Women in Medicine, will be presented with the Rhode Island Physician of the Year Award. If you are interested in attending, please e-mail me.

Works are now being accepted for RIMWA's Seventh Annual Physicians Artists' Exhibit to be held May 16-28, 2005 at the Dryden Galleries Ltd./ Providence Picture Frame Co. All are welcome — medical students, residents, nurses and physicians — to participate in this exhibit. Paintings and photography must be framed and can be no larger than 36x48. Past exhibits have included paintings, sculpture, jewelry, woodwork, woven baskets, sculptures, and quilts. For more information, call RIMWA at 331-3207 or e-mail rimwa@rimed.org.

CARPENTER TRAVEL FELLOWSHIP AWARD RECIPIENTS

Charles Chia, "*Case Report: Post-irradiation morphea in a 73 year old breast cancer patient*," American Academy of Dermatology Meeting, New Orleans.

Michael Harwood, "*Primary cutaneous cryptococcosis in an elderly pigeon breeder*," American Academy of Dermatology Meeting, New Orleans. **Jared Jagdeo**, "*Complementary anti-oxidant function of caffeine and green tea polyphenols demonstrated in vitro via modulation of 4-hydroxy-2-nonenal in normal human skin WS-1 fibroblasts*,"

66th Annual Meeting Society for Investigative Dermatology, St. Louis.

Karen Law, "*Intestinal obstruction as a complication of metastatic breast cancer: Report of 6 cases*," American College of Gastroenterology, Orlando.

Christine Liang, "*Basal cell carcinoma with matrical differentiation*" and "*HIV testing by dermatologists*," American Academy of Dermatology Meeting in New Orleans.

Erica Schockett, "*Late referrals to hospice and bereaved family perception of quality of hospice care*," Scientific Meeting of the American Geriatrics Society, Orlando.

Browsyne Tucker, "*The role of chronic placental vascular insufficiency in perinatal stroke: a case-control study*," Wilbert C. Jordan Research Forum (SNMA).

Peter Vezeridis, "*Differential expression of type X collagen mRNA as a function of strain in a 3-D chondrocyte culture system*," International Medical Student Congress, Cairo, Egypt.

THE DIRECTOR

Kathleen Baer

New Financial Aid Notification Process: We are pleased to share with you several changes in the financial aid notification process for the 2005-2006 year. We hope that these changes will improve both the quality and timeliness of information that you receive from our office so that you can make more informed financial decisions.

First, we will be sending award notifications to all students by mid-May. In previous years, notifications were mailed to third- and fourth-year students in early June and to first- and second-year students in late June. We hope that this earlier notification will give you and your parents more time to consider your borrowing needs and ensure that your scholarship and anticipated loans are reflected on the first billing statements from the Bursar's Office.

Secondly, your award letter will not list a specific loan amount in the Unsubsidized Stafford Loan Program. Instead, we will indicate the maximum annual Stafford loan amount for which you are eligible. We will send you two copies of this letter, one of which we will ask you to return to our office indicating the amount that you wish to borrow. The other copy will be for you to keep for your records. Alternatively, you can email your borrowing request to our office.

Third, included with the award notification will be a budgeting guide along with a budgeting worksheet to help you identify and plan your expenses for the year so that you can better calculate your borrowing needs. The budgeting guide will help you determine which portion of your financial aid award will need to be set aside to cover your tuition and fees (those charged by the Bursar's Office) and which portion remains for your living expenses. As in previous years,

we will also include an award guide to explain the aid notification letter itself, the procedures for crediting this aid to your student account and the process for releasing these funds to you for your living expenses. In addition, all of these enclosures will be available on our web site to provide 24/7 access for you, your parents or others who are involved in your financial planning.

We hope that these new procedures will give you better and more timely information and provide you with the tools to be more engaged in planning your budget and borrowing needs.

Financial Aid Application Deadline: Please remember that the deadline for receipt of all financial aid application materials (including tax returns) for the 2005-06 year is April 15. As in prior years, please file the FAFSA (and Need Access Form, if you are applying for institutional aid) by April 1 to ensure that we will receive the analyzed version by April 15.

Loan Consolidation Meetings: We have scheduled information sessions on Monday, April 4 and Wednesday, April 13 to present the benefits of consolidating your federal student loans. We will present all of the features of consolidation (pros and cons, which loans may be consolidated, etc), explain the application procedures and answer any other questions you have. Both meetings will be held from 5-6 pm in Room 202 of the BioMed Center. If you have Stafford and/or Perkins loans, please plan to attend. If you are not able to attend, we will place the handouts from the meeting on our web site.

Financial Planning Workshops: MD '05 Students: Please mark your calendars for the annual Financial Planning Workshops to be held on Wednesday,

April 6, and Thursday, April 7, from 4:30 pm to 7:30 pm at The Faculty Club, 1 Magee Street. These workshops will provide you with valuable information on financial issues that you will face during residency training and early years of medical practice. Topics covered in these sessions include debt management strategies, investment information, tax planning and consumer credit issues, as well as advice on personal budgeting techniques and real estate purchases.

Equally important, the workshops are wonderful opportunities for you ask questions and benefit from free, expert guidance in each of these areas. Both and James Scanlan, CFP. Janet is Vice President of Merrill Lynch and serves as on-air financial consultant for ABC6 News and Rhode Island News Channel. Jim is senior adviser with New England Financial, a MetLife company that offers the full range of financial management services to small businesses and individuals.

Continued on page 8

"Sustaining a Healer's Heart: How Physicians and Patients Find Meaning in Illness and Care"

featuring a screening of
The Choice is Yours
followed by dinner and discussion
with the filmmaker, Ruth Drazen.

**Tuesday, April 12, 2005
5:30pm - 7:30pm
Chancellor's Dining Room**

For more information contact
Donna_Goodnow@brown.edu
or Monika_Bolino@brown.edu
RSVP by April 6, 2005
863-2881

PROFESSIONAL DEVELOPMENT

Monika Bolino

Is it unprofessional to make an emotional connection with your patients? How does a physician or a medical student maintain professional boundaries while making an emotional connection? Do you have to like a patient? Is it enough to “act” like you care?

Bioethics Forum and Dinner (April 12): The Office of Professional Development and the Center for Biomedical Ethics invite all medical students and PLME students to reflect upon these and other questions at “Sustaining a Healer’s Heart: How Physicians and Patients Find Meaning in Illness and Care,” a dinner-discussion to be held Tuesday, April 12, 2005 from 5:30 pm - 7:30 pm at Chancellor’s Dining Room (in the Sharpe Refectory, corner of George and Thayer Streets). The evening will feature a screening of

The Choice is Yours, a short documentary on the life and work of Viktor Frankl, a psychotherapist and concentration camp survivor, and author of Man’s Search for Meaning. Following the video, we will share dinner and contemplate the role of a physician’s personal connection with her/his patients in the healing process, explore the benefits and costs of being emotionally distanced from patients and colleagues, and consider how understanding a patient’s life journey can inspire the professional and personal lives of physicians and medical students. A hot buffet dinner will be provided! Please RSVP via email to Monika Bolino at Monika_Bolino@brown.edu, or call 863-2881.

Petersen Fund December Recipients Update: In March, Tripler Pell was invited to present an update on her work

at the Rhode Island Free Clinic at the Rhode Island Public Health Association’s meeting concerning access to mental health services. On April 5th, more than two dozen eighth and ninth graders in the Young Doctors Club will visit Brown Medical School; Sora Chung is organizing the trip as part of the students’ mentoring experience. Suzette Brown has completed her data collection in Johannesburg, South Africa, and is assessing the results. Project proposals for the Petersen Educational Enhancement Fund’s 2005 Spring funding cycle are presently under review; recipients will be announced mid-April.

FYI: Please note that Monika Bolino can now be reached directly via the Office of Professional Development’s new telephone number: 401-863-2881.



OFFICE OF MINORITY MEDICAL AFFAIRS

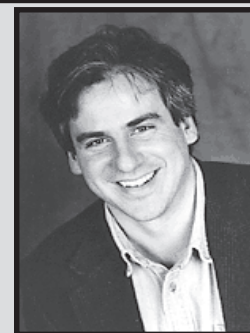
Alicia Monroe

OMMA News: We are pleased to announce the arrival of Dreux Moreland, who is providing administrative, scheduling, and programming support for the OMMA. Dreux, who is still not used to the blustery New England clime (as he is a recent transplant from Los Angeles), can be found at the OMMA desk in the Student Affairs suite. To contact him, or to schedule an appointment with Dean Monroe or Phil Tetreault, Dreux can be reached at 401-863-3335, or via Monika Bolino’s email account at Monika_Bolino@brown.edu. Dreux looks forward to meeting you. Please stop by!

THE THIRTEENTH ANNUAL HARRIET W. SHERIDAN LITERATURE AND MEDICINE LECTURE

*“Oxidation of Squalene by Squalene Epoxidase
to Form 2,3-Oxidosqualene, or
HOW I LEFT MEDICINE FOR A CAREER IN THE ARTS”*

Special guest: **ETHAN CANIN, MD**



TUESDAY, APRIL 19, 2005
SALOMON CENTER FOR TEACHING

4:00 pm Lecture in Salomon 101
5:00 pm Reception and refreshments in Salomon Center Lobby

Physician-author Ethan Canin debuted as a fiction-writer with *Emperor of the Air*, a widely praised collection of stories, some written while he was at medical school at Harvard. He went on to complete a residency in internal medicine at the University of California, and to write novels, such as *For Kings and Planets* and *Carry Me Across the Water*. Dr. Canin’s collection, *The Palace Thief*, contains the novella that served as the basis for “The Emperor’s Club,” a feature film starring Kevin Kline. Dr. Canin now teaches writing at the Iowa Writer’s Workshop. His stories are frequently used as texts in courses on medicine and the humanities.

Free and open to the public.

Contact Donna Goodnow@Brown.edu or call 863-3969 for further information.

ANNOUNCEMENTS

Arnold P. Gold Foundation 2005 Summer Research Fellowship at The Center for Discovery which serves primarily multiply disabled and medically fragile children and adults. 6-weeks beginning in June 2005. Stipend of \$3,000 plus room & board. To apply contact thamlin@sdtc.org. Application deadline April 18, 2005. Info: www.thecenterfordiscovery.org

The Donald W. Reynolds Foundation is pleased to announce a Call for Proposals for Comprehensive Programs to Strengthen Physicians' Training in Geriatrics. Letter of intent due September 1, 2005. For info and application: www.dwreynolds.org/programs/national/aging/aboutaging.htm.

Announcing the Sommer Scholars Program at the Johns Hopkins Bloomberg School of Public Health; a new global health leadership program. The Sommer Scholars Program will support up to 15 master of public health students and up to 15 doctoral students each year. Scholars will receive full

tuition and stipends. For application and info: www.jhsph.edu/sommerscholars

The 2005 Stanley M. Kaplan Essay Contest for medical students seeking entries. Entries may include topical essays, case reports, review articles, or original research that was conducted in medical school for which the student is first author. Entries must be postmarked by June 17, 2005 and sent or emailed to: Lesley M. Arnold, MD, Dept. of Psychiatry, UC College of Medicine, PO Box 670559, Cincinnati, OH 45267 or lesley.arnold@uc.edu

23rd Annual Graduate Summer Institute of Epidemiology and Biostatistics offered by the Johns Hopkins Bloomberg School of Public Health during June 20-July 8, 2005. For information about courses and enrollment contact Ayesha Khan at 410-955-7158 or email akhan@jhsph.edu.

The American Medical Association (AMA) Foundation is offering three different scholarship opportunities. The \$10,000 National Scholarship provides

the highest level of tuition assistance available from the Foundation to a deserving student based on financial need or academic excellence. All nominees must be rising seniors. Deadline to apply is May 31, 2005. The Scholars Fund offers a minimum scholarship amount of \$1,000 to students based on either financial need or academic excellence. The Scholars Fund deadline is May 31, 2005. The Minority Scholars Award is offering ten \$10,000 scholarships to students from groups that have been historically underrepresented in the medical profession. Eligible students of minority background include African American/Black, Native American, Native Hawaiian, Alaska Native and Hispanic/Latino. Awards are based on a combination of financial need, academic excellence and promise for the future. Nominees must be rising-second or rising-third-year medical students. Deadline to apply for the Minority Scholars Award is April 15, 2005. To apply contact your dean's office. For more info: www.amafoundation.org.

ADMISSIONS & FINANCIAL AID

Continued...

Make the effort to attend both sessions as they cover different topics. Your significant other is also invited to attend. Please RSVP to Filomena Zani (leave a message if necessary) at 863-1142 or email Barbara_Fuller@brown.edu before April 1. A light dinner will be provided. We look forward to seeing you at The Faculty Club!

Standard Admissions Update: We continue to receive positive feedback from applicants, students, faculty and alumni regarding this new pathway. Our office has processed approximately 1,600 applications and interviewed roughly 300 candidates. Traditional academic indicators are very strong: the majority of interviewees present

undergraduate grade point averages of 3.7 and mean composite MCAT scores of 33 (90th percentile). Our admissions committee has been hard at work reviewing applications and making decisions. Many thanks to everyone who has supported us in this effort!