



# The Pulse

## THE DEAN'S MESSAGE

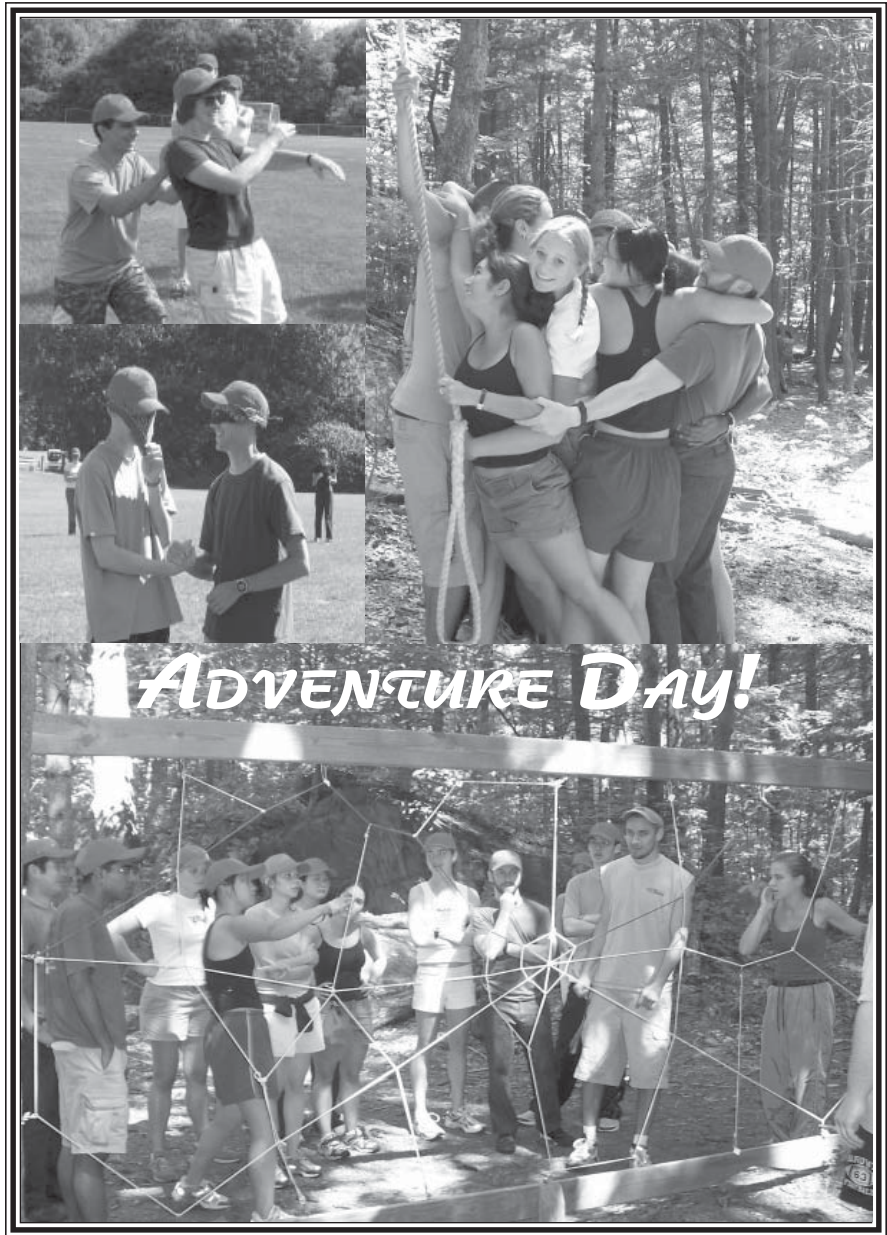
Richard Besdine

It was a pleasure to see many of you at the Medical School's Opening Convocation a few weeks ago. This event was truly energizing—as faculty, staff and students kicked off the year together—and inspiring, as we listened, rapt, to Dawn Richardson, MD'88, describing her journey from hemo-phobic medical student to competent emergency medicine physician and committed activist.

The year is off to a promising start already. I had a very productive meeting with the Medical Student Senate Executive Committee, and was impressed by their thoughtfulness, energy and cogency on important issues. I am looking forward to having lunch with students again this year, and to visiting the first- and second-year classes that have been newly integrated.

Toward the end of the month, as the final phase of the re-accreditation process by the LCME, we will have our site visit by a five-member team chaired by Steven G. Gabbe, MD, dean of Vanderbilt University School of Medicine. These individuals will be talking to students, faculty and administrators over three days. I am confident that, while areas for improvement will be pointed out to us, Brown Medical School will receive its green light for another seven years of excellence and growth.

Enjoy the fall weather and have a wonderful month.



### In this Issue

Admissions & Financial Aid.....	6
Announcements.....	3
Associate Dean.....	2
Curriculum Affairs.....	7
Dean's Message.....	1
Medical Student Affairs.....	2
Office of Women in Med.....	3
PLME Pages.....	4
Senate Reports.....	5

# Medical Student Affairs



## ASSOCIATE DEAN

Steve Smith

The 2004 Graduation Questionnaire results are in and they are very encouraging. The Association of American Medical Colleges conducts this online poll of graduating seniors from every American medical school. The percentage of Brown graduates who are either satisfied or very satisfied with their overall educational experience was slightly higher than the national average (90% vs. 89%). Among the 239 items that rated various aspects of their educational experience, 166 (69.5%) showed improvement from the year before. Another 22 were unchanged and 51 decreased.

While the 2004 GQ results are decidedly positive, our continued efforts are needed in three areas: improving the quality and integration of basic science courses, strengthening the clerkships in obstetrics and gynecology and

surgery, and reducing incidents of student mistreatment. I'm glad to say we're making progress on all three fronts.

Efforts to enhance the quality of teaching and the integration of basic science courses is ongoing. This year, histology and physiology will be closely integrated. The strategic planning subcommittee of the medical curriculum committee has proposed a plan for curriculum reform that will transform the first two years into an integrated, patient-centered curriculum. A June retreat of departmental chairs and key faculty proposed recommendations to improve teaching that will be implemented this year.

The clerkship in obstetrics and gynecology implemented changes this academic year that will improve the learning experience of students. Drs. Dean Roye and Thomas Miner

have taken over as co-directors of the clerkship in surgery in September. Expect good things to be happening there.

A task force on student mistreatment chaired by Dr. Donald Coustan has drafted new policies that will promote respect for all learners, reduce mistreatment incidents, and deal effectively with incidents that do occur. These draft policies have already been presented to the Council of Clinical Chairs and will be presented to all of the departments this year.

Enhancing the quality of the educational program is a never-ending job. The administration constantly strives to achieve the best learning environment and to be responsive to the needs of its students. We welcome your feedback and suggestions.

## THE DIRECTOR

Alexandra Morang

**Class of 2005:** Residency applications are due!! Most of the grades from fourth quarter have arrived so please order your transcripts from the Registrar's Office soon if you haven't already done so. If you would like to check on the grades that have recently come in, call Linda Bozzario at 863-2293. All of your letters of recommendation, pictures and supporting materials need to be in to Janice ASAP in order for her to scan them in. If you would like to

schedule a practice interview, please call Donna or Mary at 863-2441 to make an appointment.

**Class of 2007:** The Brown/Dartmouth Orientation Weekend will be held in early November to welcome the Dartmouth students in the MD Class of 2007. Further information on this program will be sent to your boxes in the near future. Please be on the lookout!

**Class of 2008:** If you would like to

put your editorial, writing or artistic skills to good use, think about working on the BUMS Digest for the incoming class of 2009! We need volunteers and would welcome your ideas and assistance. Please call Janice at 863-1641 if you would like to get involved.



## ANNOUNCEMENTS

**2005-2006 Sarnoff Fellowship Program** offers an **opportunity for medical students to explore a career in biomedical research**. Designed to give medical students the opportunity to spend a year conducting intensive work in a biomedical research laboratory located within the United States. Benefits fellows receive include a **yearly stipend of \$25,000, an allowance of up to \$2,000 for moving expenses, an allowance of up to \$2,000 for travel costs associated with selecting a laboratory**, funds to attend the Annual Scientific Meeting of the Stanley J. Sarnoff Society of Fellows, the Annual American Heart Association's Scientific Sessions, the annual Clinical Investigator Student Trainee Forum at the National Institutes of Health, and additional funds to enable the Fellow to present a paper at two national conferences based on Fellowship work, funds to help cover the cost of health insurance. **Application deadline is January 12, 2005**. Application available at [www.sarnoffendowment.org](http://www.sarnoffendowment.org) or by contacting Dana Boyd, Executive Director at [dana.boyd@verizon.net](mailto:dana.boyd@verizon.net) or (888) 4-SARNOFF.

The **New York Academy of Medicine** invites entries for the first annual **New York Academy of Medicine Student Essay Prize**, awarded to the best unpublished essay by a graduate student in a medical program in the United States. Essays should address a topic in the history of public health or medicine as they relate to urban health issues. **The winner will receive \$500, and the winning essay will receive expedited review for possible publication in the *Journal of Urban Health***. For guidelines see the *Journal's* instructions for authors at <http://www3.oup.co.uk/jurban/instauth>. **The postmark deadline is December 11, 2004**. Please visit our web site, <http://www.nyam.org/grants/studentessay.shtml>, or write [historyessay@nyam.org](mailto:historyessay@nyam.org) for more information.

The **Human Values in Medicine Program of the Northeastern Ohio Universities College of Medicine (NEOUCOM)** is sponsoring its **23rd annual poetry writing competition** during the 2004-2005 academic year. **Entries must be postmarked no later than Dec. 31, 2004**. Winning poems will be announced by March 15, 2005. **The top three poets will be awarded \$300, \$200, and \$100** respectively. Entries should be mailed to NEOUCOM Human Values in Medicine Program, P.O. Box 95, rootstown, OH . For questions call 330-325-6121 or email [hvm@neoucom.edu](mailto:hvm@neoucom.edu).

## OFFICE OF WOMEN IN MEDICINE

Debra Abeshaus

The Women in Medicine Mentor Program will soon be underway. Watch for a student participation form in your PO box. We currently have a number of physician mentors who have volunteered to represent specialties (see below), clinical/research areas and vocational interests too — so feel free to e-mail me if you would like to get a head start on meeting with a mentor. This is an opportunity to learn about a medical specialty, a field of health care delivery or a specific career choice from the perspective of a woman physician — and to consider ways of shaping your career goals in medicine. You are welcome to stop by the Office of Women in Medicine [Arnold Lab 130/132] about creating your match!

### Women in Medicine Mentor Program

Mentors available in the following specialties:

EMAIL  
DEBRA  
ABESHAUS AT  
DEBRA\_ABESHAUS  
@BROWN.EDU  
FOR MORE  
INFORMATION OR  
TO GET A HEAD  
START ON  
MEETING WITH A  
MENTOR. WATCH  
FOR MORE INFO  
IN YOUR MAIL-  
BOX SOON!

Dermatology  
Emergency Medicine  
Family Medicine  
Gastroenterology  
Gynecology-Oncology  
Infectious Disease  
Internal Medicine  
Neonatology/Pediatrics  
Neurology  
Obstetrics/Gynecology  
Orthopaedics  
Pediatrics  
Pedi-Emergency Medicine  
Pedi-Neurology  
Psychiatry  
Child Psychiatry  
Surgical Oncology  
Urogynecology

# The PLME Page



## ASSOCIATE DEAN

Julianne Ip

**PLME Freshmen:** Hope everyone has had a chance to meet with their advising dean. The PLME freshmen will have their first Whole Patient Program on Wednesday, September 22nd with Dr. Tim Flanigan. The second program is planned for Wednesday, October 27th with Dr. Lee Edstrom, a surgeon. Both programs promise to be very informative. It is also a great opportunity to meet with your advisor and classmates.

**For all PLMEs:** Hope all of you

have made appointments to meet with your advising dean to review your personal, academic and professional goals for the year. The Whole Physician program, open to all PLMEs and Brown Med students will take place September 27th addressing personal relationships...are they possible in med school, residency or beyond. Keep your eye out for the Focus on the Future programs addressing each medical specialty coming up.

**First- and Second-Year Brown**

**Med Students:** Be sure to make an appointment with your advising dean about your professional development portfolio. We look forward to working with you on all aspects of your year, personal, academic and various professional development opportunities. Watch your email for invitations to share a meal with us!!!

ENJOY this great autumn weather...remember to have an apple, savor the crunch and the tart sweetness.

## PLME MANAGER

Hilary Sweigart

Later this month, you will receive information on the *Medicine in Action Program* (MIAP). The MIAP provides the opportunity to get a close-up view of physicians in action in a variety of clinical fields. This can be either in the Rhode Island area during the school year, or by visiting with a Brown alum in your hometown area during winter or spring break. This is an early professional development activity which provides students with a better understanding of the physician's role and responsibilities, and to see the application of medical knowledge to real cases. After your visit, you may set up an appointment with your advisor to reflect on your experience. If you have questions on the program, stop by the PLME office, Arnold Lab Room 124, and see Ms. Joan Fullerton or myself.

**FRESHMEN — HOLD THE DATE!** The second **Whole Patient**

**Program** is scheduled for Wednesday, **October 27, 5:45-7:30 pm** in the Chancellor's Dining Room with guest speaker **Dr. Lee Edstrom**, associate professor of surgery at Rhode Island Hospital. More details will be sent to you shortly. All freshmen are required to attend this program, and dinner will be provided.


### Did you know that...

...you can travel to Rhode Island Hospital, Women & Infants' Hospital, or Hasbro Hospital via the **MedExpress** which **runs every 15 minutes from campus?** Check out: [http://www.brown.edu/AdministrationFinance\\_and\\_Admin/saferide/med.html](http://www.brown.edu/AdministrationFinance_and_Admin/saferide/med.html)

...Brown Medical School will **reimburse PLME and medical students \$100** after completion of a **medical Spanish course** taken

through the Brown Learning Community? Check out ([http://www.brown.edu/Administration/Continuing\\_Studies/blc/index.html](http://www.brown.edu/Administration/Continuing_Studies/blc/index.html)) or contact Rose Bell in Dean Smith's office at 863-1618.

...the Department of Modern Culture and Media is offering a **FREE Cinémathèque Film Series on Friday nights at 7PM** ([www.brown.edu/Departments/MCM/cinema-poster.pdf](http://www.brown.edu/Departments/MCM/cinema-poster.pdf))?

OCTOBER DATES  
TO REMEMBER 

**11<sup>TH</sup> ~ COLUMBUS DAY HOLIDAY**  
UNIVERSITY CLOSED

**31<sup>ST</sup> ~ DAYLIGHT SAVINGS**

TURN YOUR CLOCK BACK ON SAT. NIGHT!

**31<sup>ST</sup> ~ HAPPY HALLOWEEN!**

# Senate Reports

## PLME SENATE

Isis Burgos

Hello PLME! I hope that by this time in the semester you are all settled and ready to go! As always, the Senate works very hard to put together programs that you will hopefully enjoy and find of value. Listed below are some of the latest news from the Senate.

If you are currently in any of the big science and math classes (i.e. CH 33, BI 47, BN 1, PH 3, MA 10 etc...), you might benefit from attending our study group sessions. Very shortly

you will be receiving information from your respective class representatives as to where these sessions will be taking place. You are free to bring along with you any of your non-PLME friends! **Also, snacks and drinks will be provided.**

The Community Service Chairs, Annie Wang and Sarah Fleisig, have been working very hard to put together a variety of community service events that might be of

interest to you. At the end of the month, we will be returning to Hasbro Children's Hospital to have our annual pumpkin drive. Other possible service events include volunteering at the local soup kitchen and getting actively involved in the planning of Breeze Against Wheeze. If you are interested in being a part of any of these events, please contact either

[Annie.Wang@brown.edu](mailto:Annie.Wang@brown.edu) or [Sarah.Fleisig@brown.edu](mailto:Sarah.Fleisig@brown.edu).

CONTINUED ON PAGE 8

## STUDENT SENATE

Charles Hebert

The Licensing Committee on Medical Education will visit Brown Medical School during the last week of October 2004. Many of you have expressed interest in being a part of this important review of the medical school's curriculum, faculty, hospitals, and student body. Your input in the process is critical to the panel that will visit the campus. Recently, you received an email detailing how you can be involved in two luncheons that are being planned for the preclinical and clinical years. Some spots are still available if you are interested in participating (contact me if you are interested). The dates for the luncheons are **Monday, October 25, 2004** (preclinical years) and **Tuesday, October 26, 2004** (clinical years). Both events will take place at noon on the Brown University campus.

**MD '07 Students:** At its last meeting, the senate created a committee to evaluate and examine the difficulties and frustrations that some students have noted in preparing and applying for Step 1 of the USMLE. Most students generally take the exam at the end of their preclinical years (usually in June or July). The committee is charged with evaluating the logistical difficulties of navigating Step 1 – including registration, scheduling a practice test, paying for the exam, and designing schedules of study. The committee will work on these issues until the end of October and will be soliciting your input in the process, as well as that of students in the clinical years. I encourage you to bring any concerns about Step 1 to their attention. It is our hope that at the end of this semester, we can host a brief

lunchtime session jointly with the administration to address many of the preliminary concerns you may have; further events will follow in the spring as the—"boards season" nears. Please direct your comments to our secretary, Jeff Cheng ([Jeffrey.Cheng@brown.edu](mailto:Jeffrey.Cheng@brown.edu)).

The senate is working to create a few social events that will bring students from different classes together. If you have ideas for such events, please bring them to the attention of one of your senate officers. You may also attend our regular general body meetings, which take place on the first Tuesday of each month at 7:30pm.

Good luck with midterms and the fall quarter!



**THE DIRECTOR**

**Kathleen Baer**

We are pleased to announce that **Stacey Pulmano** and **Kathy McCabe** have joined our staff. Stacey is our administrative assistant who will process admissions applications and provide support for the admissions committee. Kathy is our Events Coordinator. She will be managing all admissions events and most financial aid events. Many of you know Kathy, as she worked with us in financial aid last spring during Filomena Zani's parental leave.

Our annual **Visiting Day for pre-medical post-baccalaureate students** from Bryn Mawr College, Goucher College, and Columbia University is planned for **Friday, October 15**. The event provides prospective students with a first-hand look at Brown Medical School. Participants from previous years have spoken enthusiastically about the value of this day-long visit, appreciating particularly the opportunity to meet and speak with current students.

Last year we hosted approximately 40 students, and we are expecting similar numbers next month. This year's program will include presentations and discussions about Brown's learning environment, the quality of our student body and faculty, research opportunities, and admissions requirements, among others. It will feature Dr. Arnold-Peter C. Weiss, Professor of Orthopedics and hand and wrist surgeon at Rhode Island Hospital, who will be presenting on "clinicians in action." Dr. Weiss will offer

visiting students some of his insights into student and faculty interaction during the clinical years. He will also speak about more personal encounters students may experience while involved in clinical or research projects with faculty. And no visiting day would be complete without a tour of the Anatomy Lab!

If you are interested in participating in Post-Bac Visiting Day, either as a tour guide or more informally by joining our visiting students for lunch, please contact Kathy McCabe ([Kathleen\\_McCabe@brown.edu](mailto:Kathleen_McCabe@brown.edu)). We look forward to hearing from you.

**Call for Tour Guides:** We are still looking to hire tour guides to show applicants around our campus or hospitals. If you are interested, please contact Susan Browne ([Susan\\_Browne@brown.edu](mailto:Susan_Browne@brown.edu)) for more details.

**Reminder for PLME and EIP seniors!** Our annual **Financial Aid Briefing** is scheduled for **Thursday, October 7, 2004, from 4:00 pm to 5:00 pm in the BioMed Center (Room 202, Purple Palace)**. The primary purpose of this briefing is to discuss financing options for medical school. Medical school financial aid consists of more than just student loans, so come and learn about various funding options. We also will offer budgeting recommendations to help you make a successful transition to medical school (e.g., how to handle credit card debt). Parents and partners are

welcome to join you. Refreshments will be served. If you plan to attend, please RSVP by Friday, October 1, 2004 at 863-9249 or email Kathy McCabe at [Kathleen\\_McCabe@brown.edu](mailto:Kathleen_McCabe@brown.edu). We look forward to seeing you!

**Financial Aid Refunds:** If you have not yet received your refund check from the Bursar's Office for the first semester, please contact Filomena Zani. At this point, all financial aid recipients who are eligible for a refund should have received their checks.

**MD '05 Students:** As you start your residency interviews, we remind you **to save receipts for residency interviewing expenses, as these expenses may be tax deductible** if you itemize your deductions on your tax return. In addition, please remember to **keep track of any moving expenses in the spring as these, too, may be deductible under certain circumstances**. If you are not familiar with this tax terminology, don't worry! We will provide additional guidance in January and at our annual financial planning workshops next spring.

Lastly, if you are concerned about **how to pay for residency interviews and relocation expenses**, please be aware that several lenders offer loans to fourth-year medical students specifically for this purpose. Although these loans generally are less expensive options

# Professional Development & Curriculum

## PROFESSIONAL DEVELOPMENT

Roni Phipps

Based on the recommendations of the student advisory group, professional development sponsored a dinner/discussion in September, entitled, *As a Medical Student, Early Experiences with the Human Body: Live patients and Your Cadaver* for advisors and first year students.

First year medical students will spend an afternoon at a clinical practice during October or November as part of their professional development and medical interviewing BI 371. Both the clinical faculty and the students felt shadowing was a valuable experience and the physicians have again volunteered to participate in the program, which provides the opportunity to meet physicians, increase perspective and establish a context for academic studies. As recommended by the student advisory group, first year students will be able to shadow a variety of these physicians during the month of January.

On November 9 at 5:30 in Andrews Dining Hall, the annual Fall Book Forum will be held. This year the selection is *Dying Well*, by Dr. Ira Byock, Director of Palliative Medicine, Dartmouth Hitchcock Medical Center. Dr. Byock will attend and speak on: *Caring Well for People Through the End of Life: Opportunities for Clinical and Cultural Leadership*. All PLME and medical students are encouraged to attend the dinner/discussion with community physicians, Home and Hospice Care of RI, faculty and staff. Pick up a copy of the book in suite 124, Arnold Lab. Questions? Contact Roni Phipps at, 863-9717.

## CURRICULUM AFFAIRS

Dick Dollase

The Patient Advocacy Retreat held on September 10-11, 2004 at the Hyatt Regency Hotel in Newport, RI was rated as very successful event by workshop participants. The purpose of the retreat, planned by the Patient Advocacy Coordinating Council (PACC), was to forge an patient advocacy agenda for the Medical School in the next three-to-five years. A working group headed by Sophy Hernandez, PACC chair, is now writing up recommendations for increasing and deepening patient advocacy at the Brown Medical School.

The Office of Curriculum Affairs will soon be holding a series of second-year curriculum coordination meetings. Dr. Calvin Oyer, course leader of Bio 280: Systematic Pathology, will meet with the course section leaders of Bio 351: Integrated Pathophysiology/Pharmacology: Dr. John Lonks (Infectious Disease), Dr. Harlan Rich (Gastroenterology), Dr. James Hennessey ( Endocrinology), Dr. Mary

Gordiner and Dr. Zeev Harel (Human Reproduction, Growth and Development and Dr. Stuart Schwartz (Supporting Structures). Also participating in the meeting will be Professor Professor Robert Patrick (course leader for the pharmacology section of Bio 351 and Professor Edward Hawrot, chair of the Department of Molecular Pharmacology, Physiology and Biotechnology.

The first meeting of the Medical Curriculum Committee will be held on Wednesday, September 22, from 5:00 pm until 6:30 pm at the Faculty Club. All students have an open invitation to attend this and subsequent meetings.

The Ability III: Using Basic Science in the Practice of Medicine Assessment Committee recently met with Dr. Mark Fagan, course director of the Internal Medicine Clerkship and Dr. Randy Rockney, course director of the Pediatrics Clerkship, to discuss ways to integrate Ability III more substantively into these two core clerkships.

## Call for Tour Guides!



Looking to hire tour guides to show applicants around the campus or hospitals.

If you are interested, please contact Susan Browne at [Susan\\_Browne@brown.edu](mailto:Susan_Browne@brown.edu) for more details.


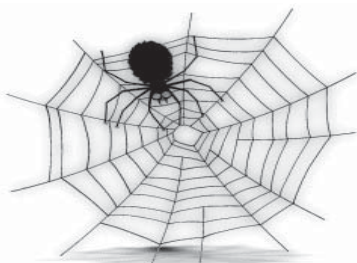
Student Affairs Newsletter  
<http://bms.brown.edu/students/pulse/>



## KATHY BAER continued...

than credit cards, we urge you to borrow conservatively, as the interest rates are adjusted quarterly and have no rate cap.

Here are two lenders that we recommend: **Key Bank's MedAchiever Residency Travel and Relocation Loan** ([www.key.com/educate/grad](http://www.key.com/educate/grad); 800-KEY-LEND) and the **Access Group's Medical Residency Loan** ([www.accessgroup.org](http://www.accessgroup.org); 800-282-1550). You can apply for these loans on line and receive a decision within 48 hours. If you have any questions, please contact Linda Gillette ([Linda\\_Gillette@brown.edu](mailto:Linda_Gillette@brown.edu)). We are still looking for student volunteers to serve on this year's **Financial Aid Policy Committee**. The primary task of this committee is to review existing and proposed financial aid policies and make policy recommendations to the dean for the 2005-06 year. If you are interested in serving on this important committee, please contact me at x31142 or by email.



**WANT TO MAKE GRADUATION AN EVENT TO REMEMBER?**  
**JOIN THE GRADUATION PLANNING COMMITTEE!**

TOPICS INCLUDE: SPEAKERS, CLASS YEARBOOK, SENIOR WEEK EVENTS, SENIOR AWARDS DINNER, AND THE MEDICAL CONVOCATION.

MEETINGS WILL BEGIN MID-NOVEMBER.  
TO SIGN UP CONTACT DONNA ARRUDA AT  
[DONNA\\_ARRUDA@BROWN.EDU](mailto:DONNA_ARRUDA@BROWN.EDU)

## PLME SENATE continued...

The Social Chairs, Annamarie Atiba and Joseph Kim, are in the works of bringing back the ER Night study breaks. If there is a different show that you would rather watch, please contact either [Annamarie Atiba@brown.edu](mailto:Annamarie_Atiba@brown.edu) or [Joseph W Kim@brown.edu](mailto:Joseph_W_Kim@brown.edu) with your idea(s). The Social Chairs are also in the early stages of planning a semi-formal for next semester...stay tuned for more information!

I just want to remind everyone that we are still selling PLME T-Shirts. The T-Shirts cost \$10 and are available in a variety of colors. In addition, we are also selling **new hooded sweatshirts**, which are available for \$20.00. If you would like information about how to select/order a T-Shirt/ sweatshirt (colors/sizes/etc), please email

[George Turini@brown.edu](mailto:George_Turini@brown.edu). Please support the Senate by purchasing a T-Shirt or a sweatshirt!! These funds help us to put together programs such as the study groups.

First year students, please don't forget that on **Wednesday, October 27<sup>th</sup>** at 5:45 pm in the Chancellor's Dining Room we will be having the last **Whole Patient Program** of the semester! Dr. Edstrom, a plastic surgeon, will be our guest speaker for the night. I look forward to seeing you there!

George and I love to hear all of your suggestions. If you have any questions or concerns, please feel free to contact us. I hope that the rest of your semester goes well. Good luck with finals!